



**Polaroid service centres and offices**

If you need information or help, or if your camera needs repair, please see your dealer or contact the nearest Polaroid office.

**Polaroid klantenservice**

Indien u hulp of informatie nodig heeft of wanneer uw camera gerepareerd dient te worden, neem dan contact op met Polaroid.

**Ateliers et centres Polaroid**

Si vous désirez davantage de conseils et si vous pensez que votre appareil nécessite une révision, prenez contact avec votre revendeur ou avec le centre Polaroid le plus proche.

**مكاتب ومراكز خدمة بولارويد**

إذا احتاجت آلة التصوير إلى إصلاح أو إذا احتجت إلى الحصول على بعض المعلومات أو المساعدة، إتصل بموزع بولارويد أو بأقرب مكتب بولارويد.

**Middle East**

Polaroid Dubai Office  
Jebel Ali Free Zone  
P.O. Box 16806, Dubai  
United Arab Emirates  
Tel.: (971-4) 816 879  
Fax: (971-4) 816 503

**Australia**

Polaroid Australia Pty. Ltd.  
13-15 Lyonpark Road  
P.O. Box 163  
North Ryde, N.S.W. 2113  
Tel.: (61-2) 9 950 7000  
Fax: (61-2) 9 887 2209

**Belgique/België**

Polaroid (Belgium) N.V.-S.A.  
Rue Colonel Bourg 111  
Kolonel Bourgstraat 111  
1140 Bruxelles-1140 Brussel  
Tel.: (32-2) 702 86 20  
Fax: (32-2) 726 92 99  
Toll free: 32 78 155 905

**France**

Polaroid (France) S.A.  
12 Bis Ave. Gay Lussac  
La Clef de Saint-Pierre, B.P. 7  
78996- Elancourt Cédex  
Tel.: (33-1) 30 68 38 38  
Fax: (33-1) 30 68 38 39

**Nederland**

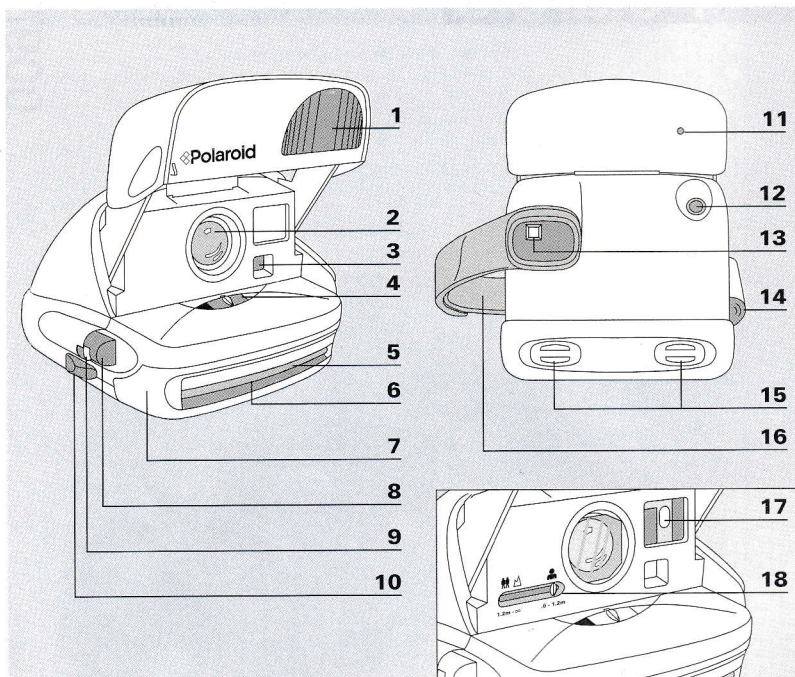
Polaroid Nederland B.V.  
Zonnebaan 45  
3606 CH Maarssen  
Tel.: (31-30) 241 0420  
Fax: (31-30) 241 1969

**Reparaties:**

Polaroid (Europe) B.V.  
Hoge Bothofstraat 45  
7511 ZA Enschede  
Tel.: (31-53) 486 5050  
Fax: (32-53) 486 9905

**U.K.**

Polaroid (U.K.) Ltd. &  
Polaroid Export Operations  
Wheathampstead House  
Codicote Road, Wheathampstead  
Hertfordshire AL4 8SF  
Tel.: (44-1582) 63 2000  
Fax: (44-1582) 63 2001  
Freefone: (800) 010119



## English

**Polaroid 600 Close-up (CL) camera (requires manual close-up setting)**

**Polaroid 600 Autofocus (AF) camera (automatic close-up capability)**

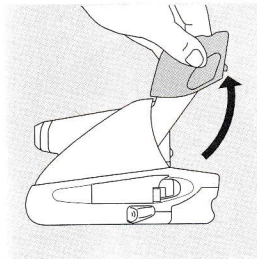
- 1 Electronic flash
- 2 Lens
- 3 Photocell
- 4 Lighten/darken control
- 5 Picture exit slot
- 6 Film shade (protects the picture from light as it exits the camera)
- 7 Film door
- 8 Shutter button
- 9 Non-flash button (600 CL camera only)
- 10 Film door latch
- 11 Green light (indicates the flash is ready to fire)
- 12 Picture counter (indicates how many pictures remain)
- 13 Viewfinder
- 14 Thumb rest
- 15 Connectors for neckstrap (not included)
- 16 Adjustable handstrap
- 17 Oval frame (indicates Close-up lens is in use—600 CL camera only)
- 18 Close-up lever (600 CL camera only)

## Nederlands

**Polaroid 600 Close-up (CL) camera met handmatig te bedienen Close-up lens**

**Polaroid 600 Autofocus (AF) camera stelt automatisch scherp**

- 1 Elektronenflitser
- 2 Lens
- 3 Foto-elektrische cel
- 4 Licht/donker keuzeknop
- 5 Fototransportopening
- 6 Filmgordijn (beschermt de foto tegen licht bij het verlaten van de camera)
- 7 Filmdeur
- 8 Ontspanknop
- 9 Uitschakelknop voor flitser (alleen bij de 600 CL camera)
- 10 Filmdeur-ontgrendeling
- 11 Groen lampje (betekent dat de flitser is geladen)
- 12 Fototeller (laat zien hoeveel foto's er overblijven)
- 13 Zoeker
- 14 Duimgreep
- 15 Bevestigingspunten draagr (niet bijgeleverd)
- 16 Verstelbare handgreep
- 17 Ovaal kader (geeft aan dat close-up lens wordt gebruikt alleen bij de 600 CL camera)
- 18 Close-up schuif (alleen bij 600 CL camera)



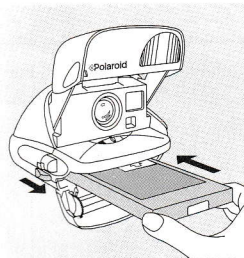
1

## Raise the electronic flash (1)

Grip the sides of the flash unit. Swing the flash unit up to snap it in place. The flash will fully charge automatically, in about 4 seconds, every time you raise the flash unit when there is film in the camera, or when you take a picture or touch the shutter button; the green flash-ready light will come on. To save energy, the flash will shut off after 60 seconds, but will turn on when you press the shutter button. See (4) below for information on taking pictures without flash.

The flash is designed to be used for every picture — outdoors and indoors. This will provide you with the best instant pictures under most lighting conditions.

When you are not using the camera, lower the flash unit. It will protect the lens and lock the shutter button.



2

## Load the film (2)

### Use only Polaroid 600 colour film.

Each film pack provides ten colour pictures and contains a high-energy battery that powers both the camera and the electronic flash.

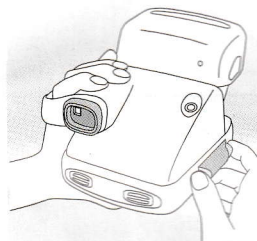
A film expiration date appears on the bottom of every film box. This date is your assurance that you are buying fresh film.

### To load the film

Push the latch forward to open the film door. Hold the film pack by its edges only, as shown, and slide it all the way into the camera. Close the film door. As soon as it is closed, the camera will eject the film cover. The green light on the back of the camera will come on to show the flash is ready to fire.

### To remove an empty film pack

Push the latch forward to open the film door. Pull the coloured tab on the film pack and remove the film from the camera.



3a

## Take the picture (3)

### Hold the camera

Grip the camera in the palm of your left hand, placing your fingers over the top of the viewfinder and your thumb under the camera (a). If it is more comfortable, place your thumb on the indentation in the hand strap (b). Adjust the Velcro closing on the hand strap so the camera is comfortable to hold.

Now place your right thumb on the thumb rest and your right index finger on the shutter button. Curl your other fingers into your palm.

Be sure to keep your fingers away from the picture exit slot.

### Position your subject

Position your subject within the camera's range:

	600 CL	600 AF
Indoors	1.2-3m (4-10 ft.)	0.6-3.5m (2-11.5 ft.)
Outdoors	1.2m-∞ (4 ft.-∞)	0.6m-∞ (2 ft.-∞)
Close-ups (indoors or out)	Manual setting required 0.6-1.2m (2-4 ft.)*	Automatic focus down to 0.6m (2 ft.)

\*With the 600 CL camera, see special instructions on manual settings for close-ups.

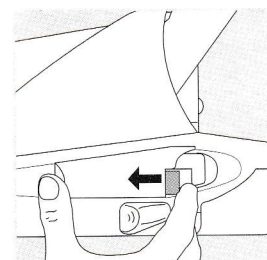
Make sure there is nothing between your camera and subject. For best results, use flash for every picture.

Indoors, place your subject in front of a light-coloured background.

Outdoors, keep the sun behind you or at your side.

### Press the shutter button

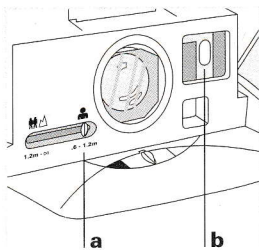
Be sure the green flash-ready light is on. If not, press the shutter button partway and release to charge the flash. Frame your subject in the viewfinder and press the shutter button. The camera will eject the picture and the flash will immediately recharge.



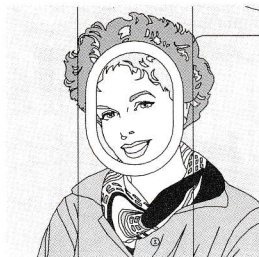
4

## Taking pictures without flash—600 CL camera only (4)

With the Autofocus camera, the flash will fire for every picture, indoors or outdoors. With the 600 CL camera, you can stop the flash by pressing only the non-flash button as shown. You might want to stop the flash when photographing a daylight scene through glass (to avoid a flash reflection) or in some other very unusual lighting situation. However, for best results in most picture-taking situations, do not stop the flash.



5a,b



5c

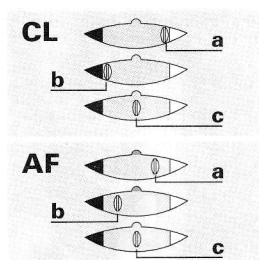
### Manual settings for close-ups—600 CL camera only (5)

Use the close-up lens when your subject is 0.6 to 1.2m (2 to 4 ft.) away. Slide the lever (a) to the 0.6–1.2m (2–4 ft.) setting. The oval frame (b), which is now visible in the viewfinder, serves as a reminder that the close-up lens is in place. When your subject's head fills the frame, you are at the correct distance for a close-up (c).

For close-ups of small children, objects, or more than one person, keep the oval frame in place and centre it on one subject. Use the full viewfinder area — not the oval frame — to frame the picture.

When you have finished using the close-up lens, return the lever to the 1.2m to ∞ (4 ft. to ∞) setting. Lowering the flash unit will also slide the lever back automatically.

Focus is automatic from 0.6m (2 ft.) to ∞ with the Autofocus camera.



6a,b,c

### The lighten/darken control (6)

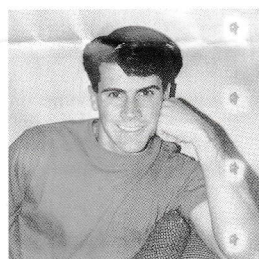
Use this control only when you want to reshoot a picture to make it lighter or darker.

To take a lighter picture, slide the control towards the white arrow (a) until you feel it stop.

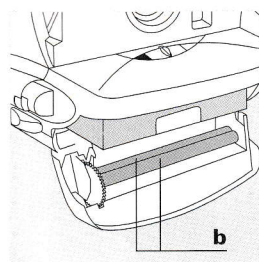
To take a darker picture, slide the control towards the black arrow (b) until you feel it stop.

Return the control to the centre position when you have finished reshooting (c).

**Note:** On the AutoFocus camera, the area above the centre of the Lighten/Darken control is red when the control is not in the centre position.



7a



7b

### Trouble-free picture taking

#### Keep the developer rollers clean (7)

Dirty rollers can cause a repeated spot or bar pattern in the picture (a). The developer rollers (b) are located inside the film door. If there is film in the camera, open the door in dim light. Clean the rollers with a damp, lint-free cloth.

#### If the camera does not eject the picture

Check the picture counter. When the film pack is empty, the flash will charge but you cannot take a picture.

#### Handling

Hold the developing picture by its wide white border. While it is developing, keep the picture out of direct sunlight; do not wave or bend it.

#### Temperature

When the temperature is below 13°C (55°F), keep the camera and film warm. Immediately place the developing picture in a warm pocket for at least a minute, being careful not to bend it. See the film box for further temperature information.

#### Lens

It is important to avoid touching the lens. To remove dust or fingerprints, breathe on the lens and wipe it gently with a clean, soft facial tissue. Do not use silicone-treated eyeglass tissues.

#### Picture tips

- For best results, always use flash.
- Always aim the camera at your main subject.
- Keep the sun behind you or at your side; avoid having the sun directly overhead.

### One Year Warranty

If your camera proves to be defective within the warranty period, we will without charge repair it or, at our option, replace it with a camera of the same or equivalent model. To verify the warranty period, keep the receipt or other proof of purchase. Otherwise the warranty is determined by the date of manufacture on the camera. The warranty does not cover damage caused by accident, misuse, or tampering with the camera, and a charge will be made for such repairs.

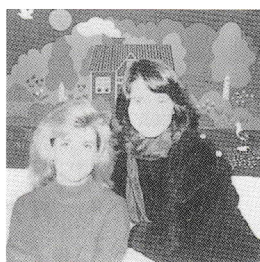
This warranty excludes all consequential damages. Some jurisdictions do not allow the exclusion of consequential damages so the foregoing exclusion may not apply to you.

For warranty service, the camera must be returned to and repaired by an authorized Polaroid Service Centre.

---

## Troubleshooting guide

---



### Pictures too light

Subject too close to camera

Stay within camera's range

Dark background/uneven lighting

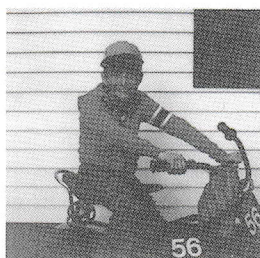
Avoid dark backgrounds; subject and background should be in even lighting

Background too far from subject

Place subject near a brightly coloured background

Wrong lighten/darken control setting

Check lighten/darken control setting



### Pictures too dark

Subject too far from camera or beyond flash range

Move in close, but stay within recommended distance ranges

Bright light or reflective surface behind subject

Avoid bright lights (lamps, windows) in scene; for reflective surfaces, stand slightly to one side of subject and take picture at an angle

Background too far from subject

Place subject near a brightly coloured background

Wrong lighten/darken control setting

Check lighten/darken control setting

Camera sees object in front of subject

Make sure there is nothing between your camera and subject

Flash did not fire

Reshoot; be sure you have not pressed non-flash button (600 CL camera only)



### Blurred picture

Flash not used in dim light

Always use flash indoors; use flash outdoors in shade, at dusk or on overcast days

Subject too close or close-up lens not set properly

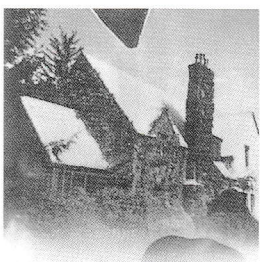
Position subject at least 0.6m (2 ft.) from camera and check close-up lens setting (600 CL camera only)

Camera or subject motion

Depress shutter button smoothly and keep finger on shutter button until all motor noise stops; keep subject still

Fingerprint on lens

See lens cleaning instructions (7)



### Incompletely developed picture

Area containing the developer packets was damaged before film was loaded

Hold film pack by edges and slide all the way into camera; do not remove film from its box until you are ready to load camera

**Caution:** This camera is battery operated. Closely supervise children when camera is operated by them or used in their presence. To avoid electrical shock, camera should not be exposed to or immersed in water or other fluids, disassembled, or operated if dropped or damaged. For repair information, contact a Polaroid Service Centre.

Specifications subject to change without notice.